



THE FORMWORK

# NOE<sup>®</sup> repair

Formwork facing repair



# NOErepair – quick, easy and neat formwork facing repair



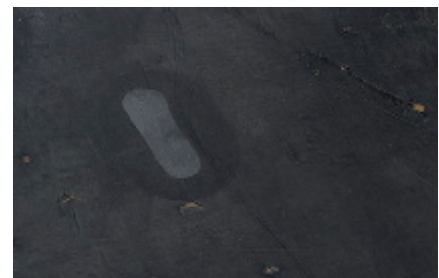
NOErepair is a cost-effective repair system for the repair of plywood facings. Developed and perfected by NOE.

Damaged areas in plywood facings can be rectified with NOErepair, simply, quickly and neatly. No previous knowledge or special tools required. NOErepair can be used anywhere, in the construction yard or on the building site.

A perfect repair can be achieved in only six steps:

- Machine out damaged area
- Clean repair site
- Apply flame to remove release agent and moisture
- Fill with NOErepair
- Allow to cool
- Smooth

NOErepair is also suitable for rectifying damaged areas in NOEboard, the plastic high-tech formwork facing from NOE.

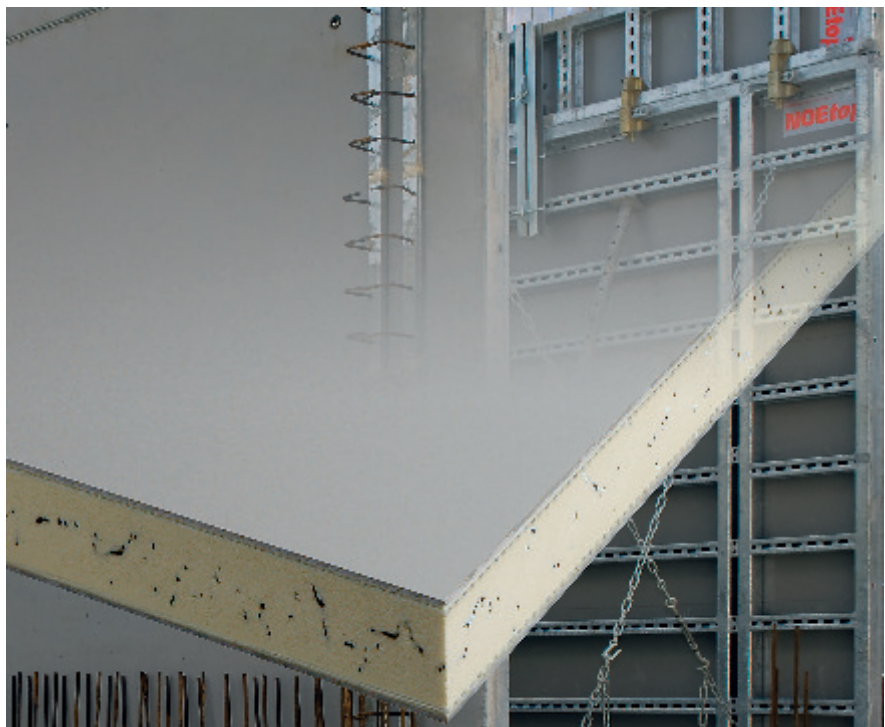


## New: NOEboard

The high-tech formwork facing with compelling product advantages:

- Solid plastic panel with innovative facing construction
- Long service life
- High reuse count
- Low weight
- Facing does not swell
- Can be screwed and nailed
- Easy to clean
- Low repair costs

For full information see [www.noeboard.com](http://www.noeboard.com)



# Ideally designed for use together: The NOErepair repair components



	Description	Weight	Part No.
		kg	Approx.
	<b>NOErepair formwork facing repair set</b> Consisting of: 1 tool chest (Part No. 397060), 1 router (397020), 1 slot cutter (397030), 1 soldering gun with gas cartridge (397050), 1 hotmelt gun MS 200 (397041), 1 kg NOErepair grey (844070), 1 kg NOErepair brown (844071), 5 NOErepair aluminium cooling blocks (397010), 1 NOErepair trimming cutter (397000)		
	<b>NOErepair tool chest</b> Empty	7,20	<b>397060</b>
	<b>Router</b>	3,10	<b>397020</b>
	<b>Slot cutter Ø 14 mm</b>	0,03	<b>397030</b>
	<b>Soldering gun with gas cartridge</b>	2,00	<b>397050</b>
	<b>Hotmelt gun MS 200</b>	1,90	<b>397041</b>
	<b>Hotmelt gun HB 710</b> Pneumatic, including 10 m connecting cable, operating console, nozzle UF 12–13 mm, Ø 1.5 mm	8,20	<b>844080</b>
	<b>NOErepair repair granulate grey</b> For NOEboard formwork facings	1,00	<b>844070</b>
	<b>NOErepair repair granulate brown</b> For plywood formwork facings	1,00	<b>844071</b>
	<b>NOErepair aluminium cooling block</b>	0,56	<b>397010</b>
	<b>NOErepair trimming cutter</b>	0,46	<b>397000</b>

No. of units	Description	Weight	Part No:
	<b>NOErepair formwork facing repair set</b> Consisting of: 1 NOErepair tool chest 1 Router 1 Slot cutter 1 Soldering gun with gas cartridge 1 Hotmelt gun MS 200 1 kg NOErepair grey 1 kg NOErepair brown 5 NOErepair aluminium cooling blocks 1 NOErepair trimming cutter	19,60	<b>397070</b>
	Part No. 397060		
	Part No. 397020		
	Part No. 397030		
	Part No. 397050		
	Part No. 397041		
	Part No. 844070		
	Part No. 844071		
	Part No. 397010		
	Part No. 397000		
	<b>NOErepair tool chest</b>	7,20	<b>397060</b>
	<b>Router</b>	3,10	<b>397020</b>
	<b>Slot cutter Ø 14 mm</b>	0,03	<b>397030</b>
	<b>Soldering gun with gas cartridge</b>	2,00	<b>397050</b>
	<b>Hotmelt gun MS 200</b>	1,90	<b>397041</b>
	<b>Hotmelt gun HB 710</b>	8,20	<b>844080</b>
	<b>NOErepair repair granulate grey</b>	1,00	<b>844070</b>
	<b>NOErepair repair granulate brown</b>	1,00	<b>844071</b>
	<b>NOErepair aluminium cooling block</b>	0,56	<b>397010</b>
	<b>NOErepair trimming cutter</b>	0,46	<b>397000</b>

<b>Please provide more information (without obligation) about</b>			
	NOErepair – formwork facing repair		
	NOEboard plastic formwork facing		
<b>Please send a sample of NOEboard</b>			
	10 mm thick	16 mm thick	22 mm thick
<b>Please arrange a visit with</b>			

Contact
Company
Department
Street
City / Post code
Tel.
Fax
E-mail